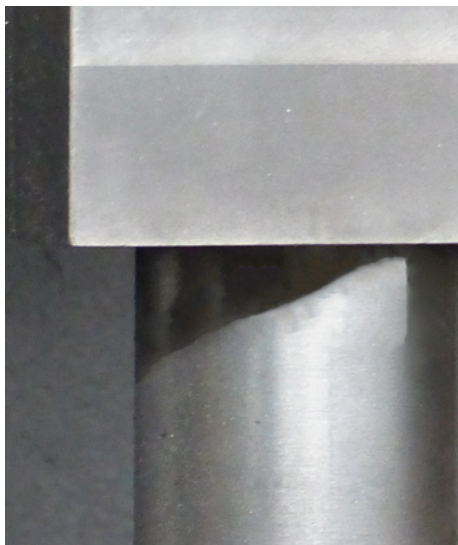


MACHINE OVERVIEW

Sub contract manufacturing



TURNING

| CNC - Turning machines | Ø Processing | Approx. width | Ø Circulation | Max. weight | Control |
|------------------------|--------------|---------------|---------------|-------------|--------------|
| Boehringer DUS 560 | 350 | 250 | 315 | | Sie 805 |
| Max Müller MD 20 | 580 | 1.000 | 650 | | Sie 840 c |
| Max Müller MD 10s | 470 | 800 | 600 | | Sie 840 c |
| Max Müller MD 7i | 450 | 800 | 600 | | Sie 840 c |
| HESSAPP VDM 1200-11 | 1.400 | ca. 600 | 1.430 | 4.000 kg | Sie 840 D |
| HESSAPP VDM 1000-11 | 1.150 | ca. 600 | 1.150 | 4.000 kg | Sie 840 D sl |

| Carousel - Turning machines | Ø Processing | Approx. width | Ø Circulation | Max. weight | Control |
|-----------------------------|--------------|---------------|---------------|-------------|-----------|
| Schiess Froriep | 1.050 | 800 | 1.250 | | |
| Schiess Froriep | 1.150 | 800 | 1.250 | | |
| Dörries | 1.600 | 600 | 1.800 | | |
| Schiess Froriep | 1.150 | 800 | 1.250 | | Sie 840 c |
| Schiess KZ 250 | 2.500 | 1.200 | 2.700 | 7.500 kg | Sie 840 D |

| Turning lathes | Ø Processing | Approx. width | Ø Circul. | Max. weight | Control |
|----------------|--------------|---------------|-----------|-------------|---------|
| Turnado Pro | 460 | 1.000 | 460 | | |

MILLING

| Machine centres | Ø Processing. | Approx. width | Ø Circulation | Max. weight | Control |
|---------------------------|---------------|---------------|---------------|-------------|-----------|
| SSB Machine centre VPZ 04 | 1.600 | 800 | 1.800 | 4.000 kg | Sie 810 D |
| Knuth Vector 1300 | 700 | 700 | 710 | 1.700 kg | Sie 828 D |
| Chiron CNC | 350 | 250 | | | Sie 810 |

| Drilling machines | Ø Processing | Approx. width | Ø Circulation | Max. weight | Control |
|---------------------------------|--------------|---------------|---------------|-------------|---------|
| Elha Radial drilling machine | 2.000 | 1.000 | 2.200 | 7.500 kg | |
| Drilling machine for set screws | 600 | 315 | 620 | 250 kg | |

SAWING

| Hacksaws | Ø Processing | Max. weight |
|----------|--------------|-------------|
| Hacksaw | 260 | |

BALANCING

| Static balancing | Ø Processing | Approx. width | Ø Circulation | Max. weight |
|------------------|--------------|---------------|---------------|-------------|
| Static balancing | 750 | 750 | | 2.000 kg |

| Dynamic balancing | Ø Processing | Approx. width | Ø Circulation | Max. weight |
|---|--------------|---------------|---------------|-------------|
| Schenck Balancing bench H 3 U | 800 | 800 | | 300 kg |
| Schenk Rotek Horizontal - balancing bench | 400 | 160 | | 25 kg |
| Schenck Balancing bench H 5 U | 2.500 | 600 | | 5.500 kg |

GROOVING

| Broaching | Groove width | Ø Circulation | Max. weight |
|-----------------------|--------------|---------------|-------------|
| Broach bench Goehring | 18 | 630 | |

| Grooving | Groove width | Ø Circulation | Max. weight |
|----------------------------------|--------------|---------------|-------------|
| Keyseating machine Rapida 63/600 | max. 100 | 2.500 | 7.500 kg |
| Keyseating machine Rapida 70/600 | max. 100 | 2.500 | 7.500 kg |

PAINTING

| Spray painting | Ø Processing | Max. weight |
|-----------------------------|--------------|-------------|
| Spray booth | 2.000 | 2.500 kg |
| Heavy-duty painting trolley | 2.500 | 7.000 kg |

Lütgert & Co. GmbH

Friedrichsdorfer Str. 48
33335 Gütersloh

Phone: +49 52 41 / 74 07 - 0
Web: www.luetgert-antriebe.de
E-Mail: info@luetgert-antriebe.de

